

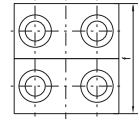
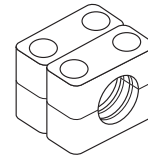
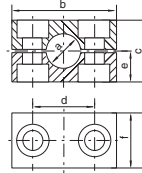
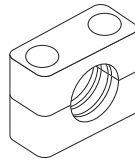
Tube clamps series C (Heavy series) – Components

DIN 3015, part 2

Order code for clamp halves:

- Polypropylene – **RCP**
- Inside smooth – **RCPG¹⁾**
- Polyamide 6 – **RCN¹⁾**
- Rubber – **RCVR**
- Aluminium – **RCA**

(Please exchange as required standard abbreviation RCP in column for “clamp halves”)



RCPD
(= 2XRCP...)

clamp size	Tube O.D. mm	Tube NB	Tube O.D.	1 part 2 clamp halves						1 part 4 clamp halves					
				RCP... Order code	dimensions:					RCPD... Order code	dimensions:				
				b	c	d	e	f	b	c	d	e	f		
1	6	G 1/8	5/16	RCP106X	55	32	33	16	30	RCPD106	55	32	33	16	60
	8			RCP108X						RCPD108					
	10			RCP110X						RCPD110					
	12	RCP112X	RCPD112												
	12.7	RCP112.7X	RCPD112.7												
	13.5	RCP113.5X	RCPD113.5												
	14	RCP114X	RCPD114												
	15	RCP115X	RCPD115												
	16	RCP116X	RCPD116												
	17.2	RCP117.2X	RCPD117.2												
18	RCP118X	RCPD118													
2	19	G 1/2	3/4	RCP219X	70	48	45	24	30	RCPD219	70	48	45	24	60
	20			RCP220X						RCPD220					
	21.3			RCP221.3X						RCPD221.3					
	22			RCP222X						RCPD222					
	23			RCP223X						RCPD223					
	25	RCP225X	RCPD225												
	26.9	RCP226.9X	RCPD226.9												
	28	RCP228X	RCPD228												
	30	RCP230X	RCPD230												
	3	30	G 1	1 1/4						RCP330X					
32		RCP332X			RCPD332										
33.7		RCP333.7X			RCPD333.7										
35		RCP335X			RCPD335										
38		RCP338X	RCPD338												
40		RCP340X	RCPD340												
42		RCP342X	RCPD342												
4	38	G 1 1/4	1 1/2	RCP438X	115	90	90	45	45	RCPD428	115	90	90	45	90
	40			RCP440X						RCPD440					
	42			RCP442X						RCPD442					
	45	RCP445X	RCPD445												
	48.3	RCP448.3X	RCPD448.3												
	50	RCP450X	RCPD450												
	51	RCP451X	RCPD451												
	52	RCP452X	RCPD452												
	55	RCP455X	RCPD455												
	57	RCP457X	RCPD457												
	60.3	RCP460.3X	RCPD460.3												
	63	RCP463X	RCPD463												
	65	RCP465X	RCPD465												
70	RCP470X	RCPD470													

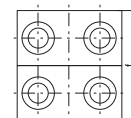
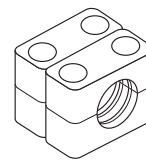
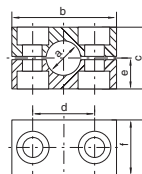
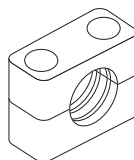
Continuation see next page ...

Tube clamps series C (Heavy series) – Components (Continued)

DIN 3015, part 2

Order code for clamp halves:

 Polypropylene – **RCP**
 Inside smooth – **RCPG**¹⁾
 Polyamide 6 – **RCN**¹⁾
 Rubber – **RCVR**
 Aluminium – **RCA**

 (Please exchange as required standard abbreviation
 RCP in column for “clamp halves”)

RCPD
 (= 2XRCP...)

clamp size	Tube O.D. mm	Tube NB	Tube O.D.	1 part 2 clamp halves						1 part 4 clamp halves					
				RCP... Order code	dimensions:					RCPD... Order code	dimensions:				
				b	c	d	e	f	b	c	d	e	f		
5	70	G 2½	3	RCP570X	152	120	122	60	60	RCPD570	152	120	122	60	120
	73			RCP573X						RCPD573					
	75			RCP575X						RCPD575					
	76.1			RCP576.1X						RCPD576.1					
	80	G 3	3¼	RCP580X											
	82.5			RCP582.5X						RCPD582.5					
	88.9			RCP588.9X						RCPD588.9					
	90			RCP590X						RCPD590					
6	90	G 3½	4	RCP690X	205	170	168	85	80	RCPD690	205	170	168	85	160
	97			RCP697X						RCPD697					
	100			RCP6100X						RCPD6100					
	101.6	G 4	4¼	RCP6101.6X											
	108			RCP6108X						RCPD6108					
	114.3			RCP6114.3X						RCPD6114.3					
	127			RCP6127X						RCPD6127					
7	127	G 5	5	RCP7127X	250	200	205	100	90	RCPD7127	250	200	205	100	180
	133			RCP7133X						RCPD7133					
	140			RCP7140X						RCPD7140					
	150	G 5½	6	RCP7150X											
	152.4			RCP7152.4X						RCPD7152.4					
	159			RCP7159X						RCPD7159					
	165.1			G 6						6½					
168.3	RCP7168.3X	RCPD7168.3													
8	168.3	G 8	6⅝	RCP8168.3X	320	270	265	135	120	RCPD8168.3	320	270	265	135	240
	177.8		7	RCP8177.8X						RCPD8177.8					
	193.7		7⅝	RCP8193.7X						RCPD8193.7					
	203		8⅝	RCP8203X											
	219.1			RCP8219.1X						RCPD8219.1					
	220		RCP8220X	RCPD8220											

Metal parts also available in stainless steel.

¹⁾ Only sizes 1–4