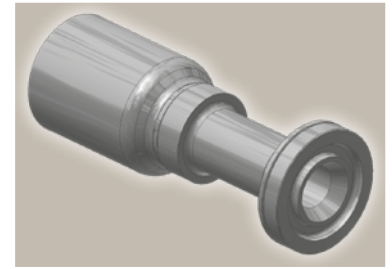
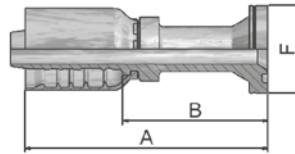


6A ISO 6162-2-Flange Straight

ISO 12151-3-S-S – SFS
(42.0 MPa/ 6000 psi)



| Part Number | Hose I.D. | | | | Flange Inch | A mm | B mm | F mm |
|-------------|-----------|-------|------|------|----------------|---------|---------|---------|
| | DN | Inch | Size | mm | | | | |
| 16A77-8-8 | 12 | 1/2 | -8 | 12.7 | 1/2 | 89 | 55 | 32 |
| 16A77-12-8 | 12 | 1/2 | -8 | 12.7 | 3/4 | 69.4 | 34.75 | 41 |
| 16A77-12-10 | 16 | 5/8 | -10 | 15.9 | 3/4 | 75 | 36 | 41 |
| 16A77-16-10 | 16 | 5/8 | -10 | 15.9 | 1 | 80 | 41 | 48 |
| 16A77-8-12 | 19 | 3/4 | -12 | 19.1 | 1/2 | 106 | 60 | 32 |
| 16A77-12-12 | 19 | 3/4 | -12 | 19.1 | 3/4 | 114.2 | 68.2 | 41 |
| 16A77-16-12 | 19 | 3/4 | -12 | 19.1 | 1 | 88.2 | 42 | 48 |
| 16A77-20-12 | 19 | 3/4 | -12 | 19.1 | 1 1/4 | 93 | 47 | 54 |
| 16A77-12-16 | 25 | 1 | -16 | 25.4 | 3/4 | 126 | 72 | 41 |
| 16A77-16-16 | 25 | 1 | -16 | 25.4 | 1 | 113 | 59 | 48 |
| 16A77-20-16 | 25 | 1 | -16 | 25.4 | 1 1/4 | 103 | 49 | 54 |
| 16A77-16-20 | 31 | 1 1/4 | -20 | 31.8 | 1 | 145 | 82 | 48 |
| 16A77-20-20 | 31 | 1 1/4 | -20 | 31.8 | 1 1/4 | 146 | 82 | 54 |
| 16A77-24-20 | 31 | 1 1/4 | -20 | 31.8 | 1 1/2 | 118 | 55 | 64 |
| 16A77-20-24 | 38 | 1 1/2 | -24 | 38.1 | 1 1/4 | 154 | 87 | 54 |
| 16A77-24-24 | 38 | 1 1/2 | -24 | 38.1 | 1 1/2 | 162 | 96 | 64 |
| 16A77-32-24 | 38 | 1 1/2 | -24 | 38.1 | 2 | 133 | 66 | 79 |
| 16A77-32-32 | 51 | 2 | -32 | 50.8 | 2 | 183 | 105 | 79 |

SAE flange halves see in section Eb.

Fittings with standard O-ring seals can be used for temperatures from -40 °C up to +105 °C.

O-rings see section Eb. Special O-rings are available on request.

Approved **fitting series** for **hose types**, depending on size:

| | | | | | | | | | | | | | | | |
|-----------|--------|--------|-------|-----|-------|-------|-----|-------|-------|-----|-------|-------|-------|------|-----|
| 77 | 387 | 387ST | 387TC | 487 | 487ST | 487TC | 787 | 787TC | 787ST | 797 | 797TC | 797ST | 797RH | SX42 | ... |
| | SX42LT | SX42TC | | | | | | | | | | | | | |